

Knowledge Organiser—Still Life

Still Life -
a collection of inanimate objects
(things that are not living)

Primary source observational drawing

- drawing something real in front of you.

Secondary source observational drawing

- drawing something from a picture/photograph

ART

shading	Ways to show the tones in your subject e.g. hatching,
gradual	Changing by small amounts
contrast	opposite elements (light vs dark, rough vs smooth)

Key Vocabulary

composition	The position and layout of shapes on the paper.
balance	The even spread and spacing of shapes across the design.
viewfinder	A window used to select a focus area for drawing.
shape	The outline of the still-life objects.
line	Defines shape - the outer edge of something.
tone	How light or dark a shape is.
proportion	The sizes of an object in relation to
overlap	The way some objects tuck underneath
orientation	The direction that a shape has been put

Some famous artists and their still-



Paul Cezanne



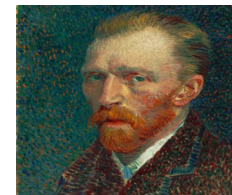
The Basket of Apples



Pieter Claesz



Vanitas with Violin



Vincent Van Gogh



Vase with

Fifteen



Giorgio Morandi



Natura Morta