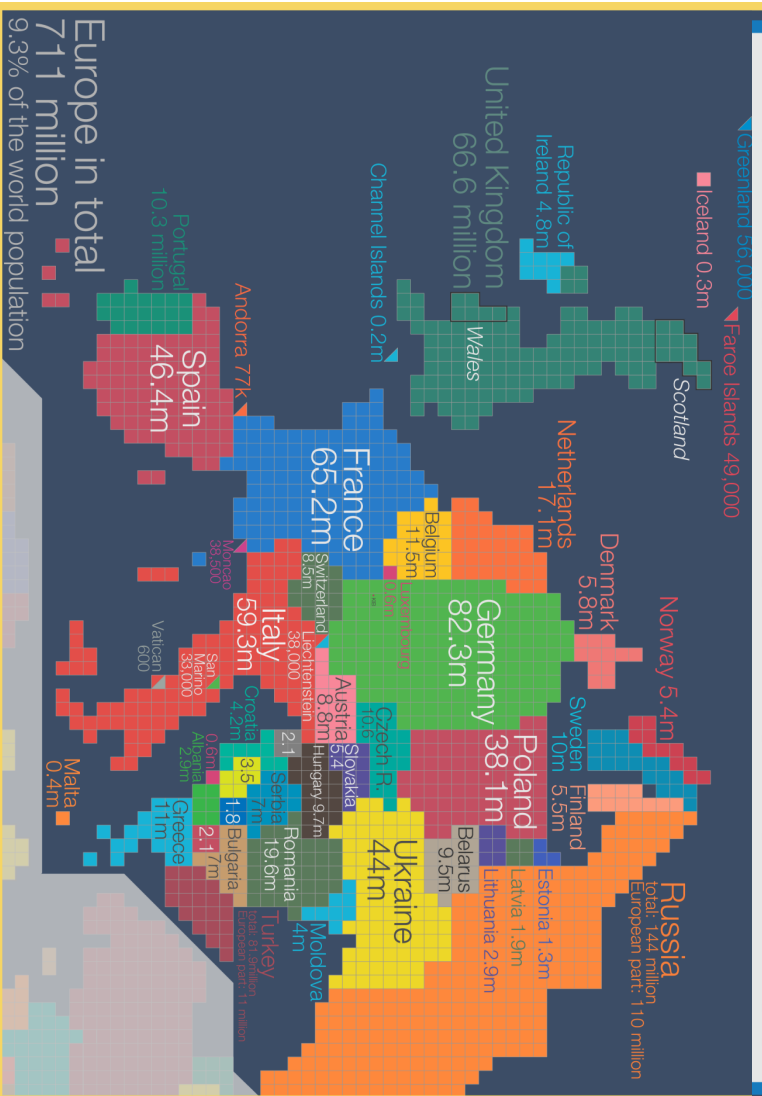


## Y4 Geography Knowledge Organiser

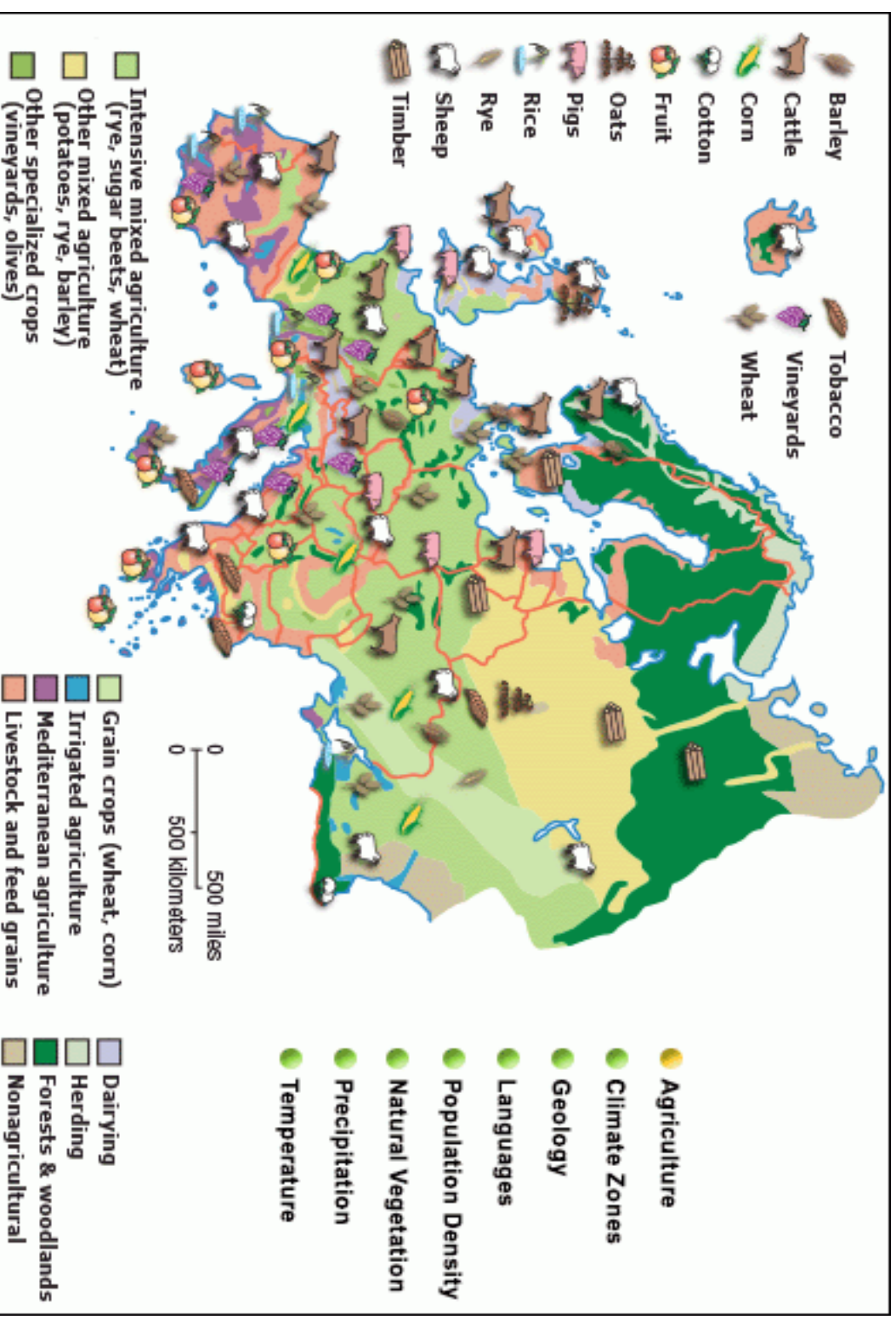
Physical Geography – making comparisons between countries in Europe to other areas of the World.

### Europe's Population in 2018

The country's size in this map represents the size of the population. Each square [■] represents 500,000 people.



Vocabulary  
Land use - agricultural, tourism, residential, commercial  
Economy - import, export  
Natural Resources  
Comparison  
Landforms - mountains, valleys, canyons, lakes, rivers, coasts, bays.  
Produce - fruit, vegetables, oats, wheat  
Language



# Economic Activity in Europe

## Land use

- Commercial agriculture
- Dairying
- Livestock raising
- Nomadic herding
- Forestland
- Limited agriculture

## Major resources

- Bauxite
- Coal
- Fish
- Iron ore
- Natural gas
- Oil
- Other minerals
- Timber
- Uranium
- Manufacturing center



0 125 250 miles  
0 125 250 kilometers

